

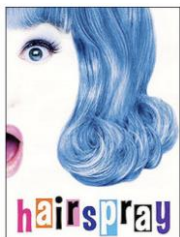
2012 Tony Nominations

Best Musical <ul style="list-style-type: none"> • <i>Leap of Faith</i> • <i>Newsies</i> • <i>Nice Work If You Can Get It</i> • <i>Once</i> 	Best Revival of a Musical <ul style="list-style-type: none"> • <i>Evita</i> • <i>Follies</i> • <i>The Gershwins' Porgy & Bess</i> • <i>Jesus Christ Superstar</i>
Best Performance – Actor (Musical) <ul style="list-style-type: none"> • Danny Burstein – <i>Follies</i> • Jeremy Jordan – <i>Newsies</i> • Steve Kazee – <i>Once</i> • Norm Lewis – <i>The Gershwins' Porgy & Bess</i> • Ron Raines – <i>Follies</i> 	Best Performance – Actress (Musical) <ul style="list-style-type: none"> • Jan Maxwell – <i>Follies</i> • Audra McDonald – <i>The Gershwins' Porgy & Bess</i> • Cristin Milioti – <i>Once</i> • Kelli O'Hara – <i>Nice Work If You Can Get It</i> • Laura Osnes – <i>Bonnie and Clyde</i>
Best Direction of a Musical <ul style="list-style-type: none"> • Jeff Calhoun – <i>Newsies</i> • Kathleen Marshall – <i>Nice Work If You Can Get It</i> • Diane Paulus – <i>The Gershwins' Porgy & Bess</i> • John Tiffany – <i>Once</i> 	Isabel Stevenson Award <ul style="list-style-type: none"> • Bernadette Peters Special Tony for Actors' Equity Association <ul style="list-style-type: none"> • Hugh Jackman

Coming Soon



August 2012



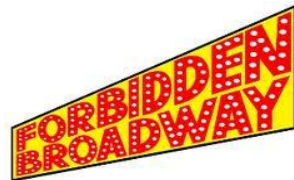
August 2013



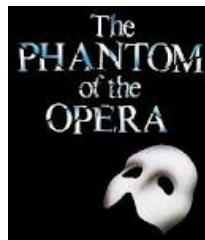
Nov/Dec 2012



Nov/Dec 2013



Early 2013



August 2014

STAGE RAGE







www.abbeymusicaltheatre.co.nz

Editorial

As we sit here looking out the window at the lovely blue sky, wondering why we aren't outside in the fresh air ... we ponder what is ahead for all of us during the winter. The cold temperatures will no doubt be offset by the warmth and dedication of our fellow thespians as we bring you the next chapter of our exciting year, which started with "Sweet Charity". Thank you to everyone who was involved in this production – the majority of feedback from this production is that it was fresh and exciting and very well received. We are currently in rehearsal for "Chess", which will be a splendiferous production in the Regent Theatre in August this year. There is already a buzz about this show – so don't miss out on booking your tickets when they open at TicketDirect soon.



AMT Annual General Meeting

The Annual General Meeting (AGM) of Abbey Musical Theatre was held on Tuesday, **24 April 2012**. From the nominations received, no votes were required. The AMT Board for the 2012/13 year are;

President: John Spelman
Board Members: Allan Nagy, Al Warren, Craig Lundy, Jayne McQueen,
Danny Goodman, Shane Brown
Patron: Iain Lees-Galloway

There is currently one vacancy on the AMT Board. Therefore, the current Board is able to appoint someone to this position but they will only serve one year of service, instead of the usual two years.



Earthquake Prone Buildings

Extensive discussion was held at this year's AGM regarding the City Council's list of "Earthquake Prone Buildings" in Palmerston North. At the time of the AGM, a meeting had been scheduled by the Council, but had not as yet been held. Since then, this meeting has been held. There are 109 'at risk' buildings identified in Palmerston North, one of which is the Abbey Theatre. The Abbey Theatre has a Heritage Status and, as such, is deemed valuable, in worth of repair. In response to a question asked as to whether the Council could close a building down, the answer was that the Council has no power to close or 'red sticker' a building. However, when the building in question holds public, the owners can be made to fulfil their obligations to protect the public. Funding is available from the Council for strengthening of Heritage buildings, as well as Government funding. Central Government has advised that "Heritage Buildings" are to be protected wherever possible. Discussions now need to be held with the Council regarding "where to from here" in order to make an informed decision. Therefore, once these discussions have been held and the AMT Board has been able to consider all its options, information will be provided to AMT members on the Board's recommendations.



Costume Hire

Abbey Costume Hire now has new hours, being;

Monday/Tuesday/Wednesday & Friday	11.30 a.m. to 5.30 p.m.
Thursday	11.30 a.m. to 7.30 p.m.
Saturday	10.00 a.m. to 2.00 p.m.

Also – don't forget that if you have any unwanted clothes or sewing items (materials, buttons, zips, ribbons or bows etc.), Costume Hire would be willing to take these off your hands. If you are unable to drop them off, contact Costume Hire and they will pick them up.



"CHESS" has been in rehearsal for approximately four weeks now and it is sounding fabulous. Check out the amazing cast below

ANATOLY (The Russian)
FREDDIE (The American)
FLORENCE
SVETLANA
MOLOKOV
ARBITER
WALTER

Chris Crowe
Pete Flynn
Val Andrew
Amy Hunt
Bruce Sinclair
Andrew Jamieson
Damian Thorne



CHESS
THE MUSICAL

Ensemble

Siok Khim Taylor, Bethani Eustace, Amy Burlace, Hayley Tinning, Erica Ward, Merryn Osborne, Katherine Lyons, Raelene Watts, Mary Smith, Sarah Leishman, Emma-Jade Mechen, Gail Lucinsky, Christine Lockett, Anna Pitt, Mary Flemmer, Candace McGrath, Kathryn Carpendale, Jody Marshall, Steph Milne, Melissa Basher, Amanda Pullar, Annette Swenson, Maureen Harding, Sophia Parker, Kami McKnight, Aby Stokes, Stephanie Harmsworth, Brigid Iversen, Emily Morrison, Dianne Smith, Pat West, Dave Chisholm, Chris Thompson, Hayden Giles, Andrew Mock, Cam Dow, Shane Brown, Andrew Hodgson, Jason Poon, Steve Jenkins, Scott Andrew, Leith Marshall, Danny Goodman, Glen Eustace, Paul Lyons, Jeff Paewai, Read Wheeler, Greg Dow, Nick Rowell, Larry Walker, Mike Whitton, Pete Mock, Terry Stewart, Rob Roberts

Children's Choir

Briony Milne, Jamie Wheeler, Naomi Laven, Courtney Laing, Rachel Vincent, Annelies Orme, Miriam Carr, Marino Te Rata-Owen, Katie Atkins, Ellanor Babbage, Bailey Holtham, Bradley Forsyth, William Morgan, Harry Dunlop, Elizabeth Laven, Amy McLaren, George Baldwin, Grace Dean, Lisabet Morgan, Hannah Reynecke, Meg Tisdall, Lucy Baldwin, Sophia Babbage

Dancers

Luke Cooper, David Mock, Anastasia Petersen, Madison Horman (more TBA)

